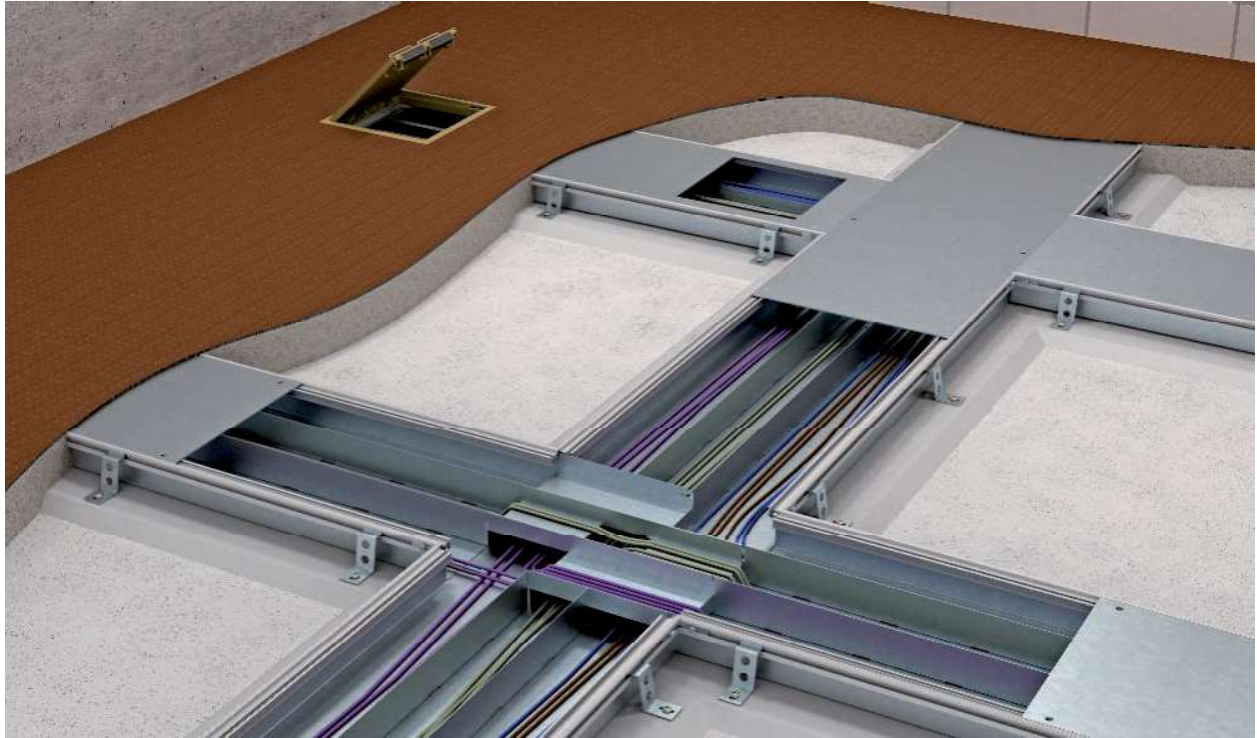


OKA-T open trunking system, screed-flush



System description



The open, screed-flush OKA-T trunking system is used for cable routing and the installation of electrical resources in the underfloor area. The floor trough and trunking cover are made from galvanised sheet steel with a zinc coating of 275 g/m² according to EN 10327 DX51D+Z275-N-A-C.

The trunking system is closed on all sides. It can be opened along the entire length. The side profiles contain an endless screw track for the fastening screws of the trunking covers, meaning that all the trunking covers can be mounted at any point in the trunking

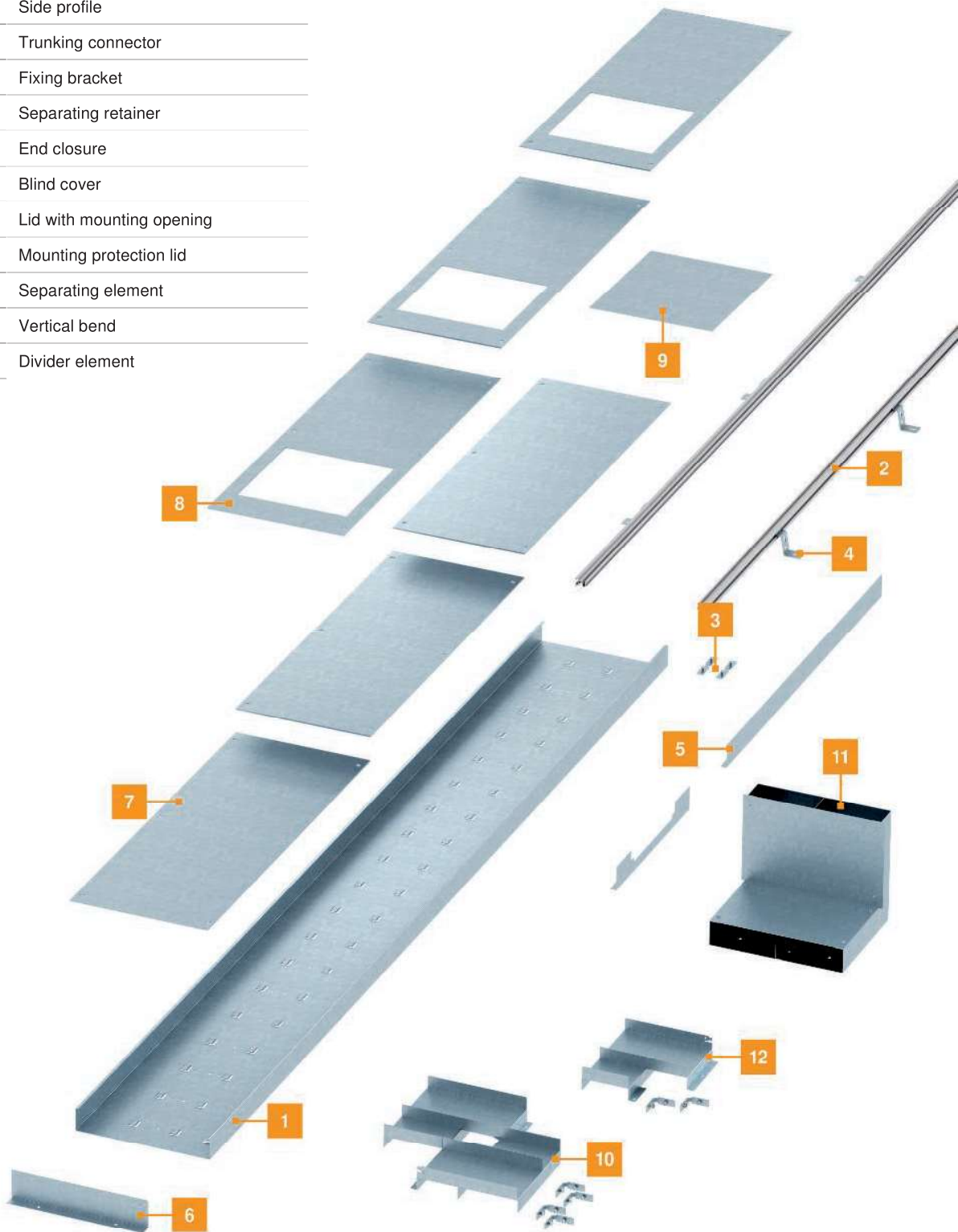
run. Even covers shortened for construction reasons can be fastened to any point in the trunking run.

The side profiles support the screed connection of the trunking system, providing a high load capacity. Separating retainers are conductively connected to the trunking bases on insertion. Screwing the trunking covers to the side profiles means that all the metallic parts of the system have a conductive connection. The trunking system can be included in the equipotential bonding safely and easily.

Installation principle

OKA-T screed-flush trunking system

1	Trunking base
2	Side profile
3	Trunking connector
4	Fixing bracket
5	Separating retainer
6	End closure
7	Blind cover
8	Lid with mounting opening
9	Mounting protection lid
10	Separating element
11	Vertical bend
12	Divider element



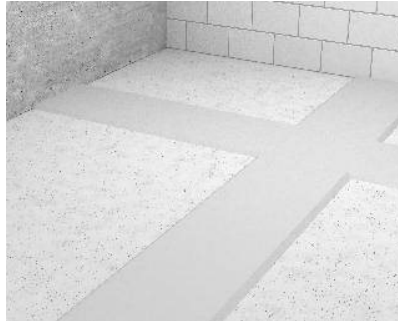
Mounting aid

OKA-T open trunking system, screed-flush



Preparations for mounting

The exact course of the OKA-T trunking is measured and specified by tensioning a cord. Trunking branches are also marked on the raw floor.



Preparation of mounting substrate

Prepare the mounting substrate along the course of the trunking with an additional screed bed. Ensure that the surface is level and smooth.



Laying trunking bases

The trunking bases are routed along the intended course and the side profiles added. Connecting pieces are inserted at the joints.



Connection of trunking bases

The connection of the side profiles aligns the trunking bases. In addition, the screw connection means that the side profiles have a conductive connection and can be included in the protective measure.



Trunking cover mounting

The trunking covers are laid in the side profiles and fixed with the lid fixing screws.



Fixing the trunking system

Trunking fixing brackets can be inserted externally in the side profile from both sides. There is no fixed position for the fixing brackets.



Trunking fixing

Fix the aligned trunking section to the floor using the fixing bracket.



Create trunking junction

Open the base and the side profile of the continuing trunking at the predetermined location. Fix the branching trunking to the continuing trunking using the connecting brackets.



Insertion of the T-branch separating element

A separating element is installed in the junction area of the trunking to ensure internal separation even within the branch trunking.



Insertion of the 90° branch separating element

Separating retainers are installed in the junction area of the trunking to ensure internal separation even within the branch trunking.



Trunking mounting for 90° branches

Shorten the side profile of the branching trunking by the width of the incoming trunking. All the side profiles are interconnected using a connecting bracket and a connecting piece. The scope of delivery of the construction kit contains all the parts required for mounting.



Trunking mounting for 90° branches

Mounted 90° branch with mounted lids.



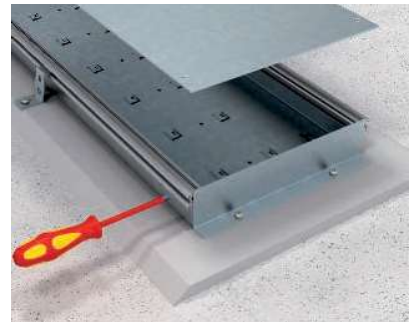
Insertion of the intersection separating element

At an intersection, all the side profiles are connected using connecting brackets. A separating element ensures the continuation of the individual compartments.



Trunking mounting for intersections

Crossings can be created in the same way as junctions. The work corresponds to two opposing junctions.



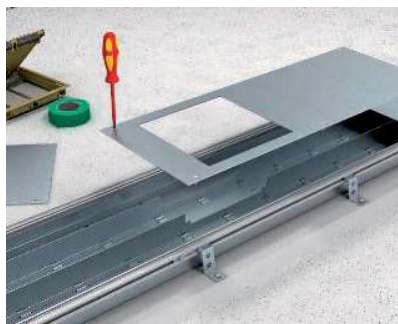
End cover mounting

The trunking end piece is simply mounted in front of the trunking opening to be closed.



Create equipotential bonding

All the metallic parts of the trunking system must be included in the protective measure against indirect contact with parts carrying voltage and are therefore equipped with the appropriate connection options for the earth conductor clamp.



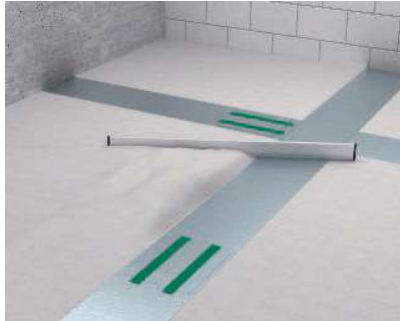
Mounting lid with mounting opening

Mounting lids can be used at any point in the trunking system. Fix the lids in the side profiles using the lid fixing screws.

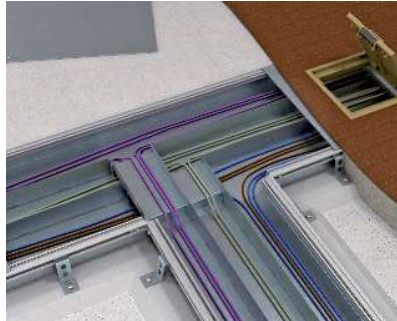


Mounting opening cover

Cover the mounting openings of the lids with protective mounting lids and fix them using adhesive tape. The protective mounting plate can be removed when the screed has been applied.

**Screed work**

The screed can be laid after the trunking system has been routed, fixed and covered. Ensure that the side profiles are well supported by screed.

**Cabling**

Separating elements ensure safe separation of the cables.

**System mounting**

The system is completely mounted when all the separating retainers and separating elements have been mounted and all the trunking covers are screwed tight to the trunking system.