

Selection Guide for Underscreed Trunking and Service Outlet Boxes size 350-3

Duct 250 mm width, 28 mm height

	Type	Item no.
Duct, 3-compartment*	S3 25028	7400 32 4
Connection shackle	VL 25028E	7400 96 6
Vertical bend, 3-compartment*	KV3 25028	7400 64 4
End cap	SES 25027	7404 00 2

Duct 250 mm width, 38 mm height

	Type	Item no.
Duct, 3-compartment*	S3 25038	7400 32 8
Connection shackle	VL 25038E	7400 96 8
Vertical bend, 3-compartment*	KV3 25038	7400 64 8
End cap	SES 25037	7404 00 6

Duct 350 mm width, 28 mm height

	Type	Item no.
Duct, 3-compartment*	S3 35028	7400 33 6
Connection shackle	VL 35028E	7400 97 2
Vertical bend, 3-compartment*	KV3 35028	7400 65 6
End cap	SES 35027	7404 01 4

Duct 350 mm width, 38 mm height

	Type	Item no.
Duct, 3-compartment*	S3 35038	7400 34 0
Connection shackle	VL 35038E	7400 97 4
Vertical bend, 3-compartment*	KV3 35038	7400 66 0
End cap	SES 35037	7404 01 8

* Underfloor Trunking supplied in 2 metre lengths.



UZD350-3 underfloor box

Screed height in mm	Type	Item no.
70-125	UZD350-3	7410 03 4

Duct connection bracket for Earth Grounding

Type	Item no.
VW E	7400 98 0

Quick release aid

Type	Item no.
SE UZD3	7410 16 0

Nominal size 6



Nominal size 9



Nominal size R9



Dry and moist-cleaned

Blanking lid

DUG 350-3 6	7400 50 9
--------------------	-----------

Blanking lid

DUG 350-3 9	7400 51 3
--------------------	-----------

Blanking lid

DUG 350-3 R9	7400 54 9
---------------------	-----------

Service outlet

Iron grey	GES6 U 7011	7405 30 8
Graphite black	GES6 U 9011	7405 31 2

Point loading with small surface of Ø 13mm: 2kN
Point loading with big surface of Ø 130mm: 3kN

Service outlet and inspection lid

Iron grey	GES9-3B U 7011	7405 07 7
Graphite black	GES9-3B U 9011	7405 07 9
Iron grey	ZES9-2 U10T 7011	7406 67 2

Point loading with small surface of Ø 13mm: 3kN
Point loading with big surface of Ø 130mm: 5kN

Service outlet

Iron grey	GESR9 10U 7011	7405 52 8
Graphite black	GESR9 10U 9011	7405 53 2

Point loading with small surface of Ø 13mm: 3kN
Point loading with big surface of Ø 130mm: 5kN

Wet-cleaned

IP 20 IP 20 when in use

IP 44 IP 44 when not in use



Cassette for tube body

RKFN2 9 VS20	7409 36 8
---------------------	-----------

Decouppable cassette

RKFN2 UZD3 9 VS20	7409 37 8
--------------------------	-----------

Levelling profile

NW 350-3 QK	7410 54 4
--------------------	-----------

Point loading with small surface of Ø 13mm: 3kN
Point loading with big surface of Ø 130mm: 5kN



Cassette for tube body

RKFR2 9 V20	7409 43 0
--------------------	-----------

Decouppable cassette

RKFRN2 UZD3 R9 VS20	7409 45 0
----------------------------	-----------

Levelling profile

NW 350-3 RK	7410 55 6
--------------------	-----------

Point loading with small surface of Ø 13mm: 3kN
Point loading with big surface of Ø 130mm: 5kN

Variable floor covering recess in the service outlet:
Rectangular: 5 or 10 mm
Round R9: 10mm

Stainless steel cassettes with 20 mm floor covering recess
Height adjustment range 110-155 mm [round]
Height adjustment range 105-150 mm [rectangular]

Stainless steel cassettes with 20 mm floor covering recess
Height adjustment range 110-155 mm [round]
Height adjustment range 105-150 mm [rectangular]
Please order the tube body separately.

Device installation, nominal size 6

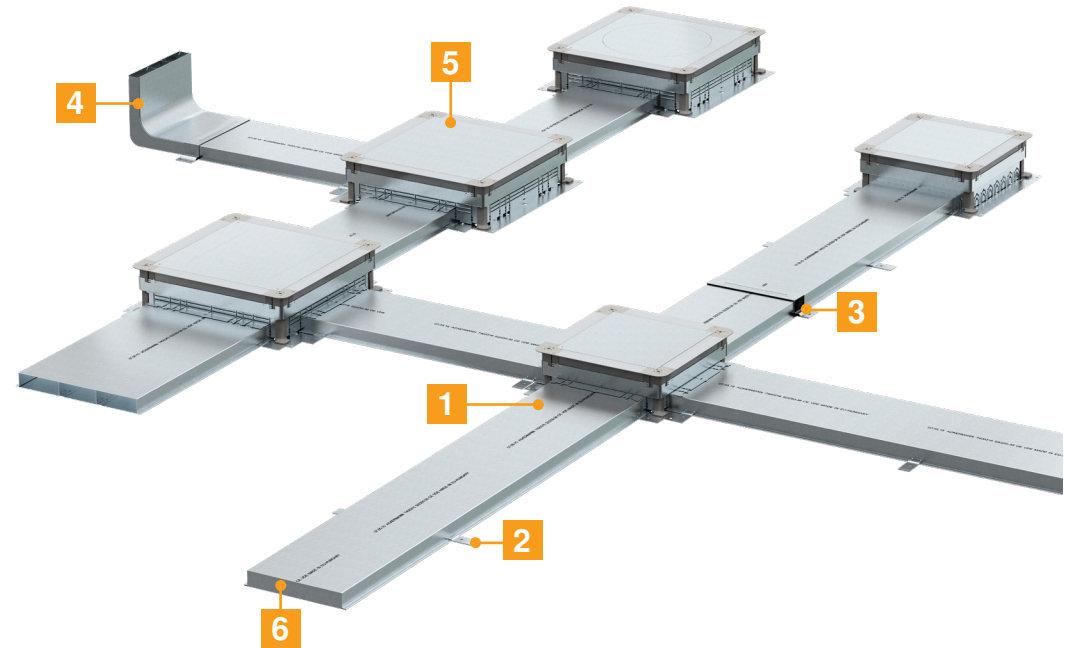


	Mounting plate	Cover plate	Cover plate	BS socket with cover plate
Type	MT 6 AP2	AP MT2 0	AP MT2 1	AP MT2 BS 2SS0
Version	for 3 cover plates AP MT2	blank	for LJC6C	Switched double socket
Item no.	7407 75 2	7406 91 2	7406 91 6	7407 87 2

Device installation, nominal size 9 and R9



	Mounting plate	BS socket with cover plate	BS socket with cover plate	Cover plate	Cover plate
Type	MT 9R9 AP 5	AP MT5 BS 2SS0	AP MT5 BS 2xSS0	AP MT5 0	AP MT5 1
Version	for 3 cover plates AP MT5	Switched double socket	2 x switched single sockets	blank	for LJC6C
Item no.	7407 75 6	7407 87 0	7407 87 8	7406 90 4	7406 90 8

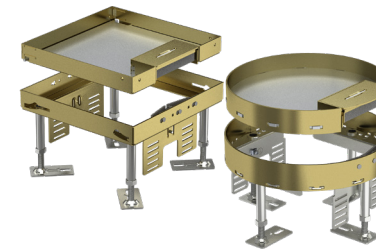


- 1 Underfloor installation duct
- 2 Duct connection bracket
- 3 Connection shackle
- 4 Vertical bend
- 5 Underfloor junction and branch box (UZD)
- 6 End cap

Accessories



	Tube body for round and square cassettes	Tube body for round and square cassettes, with handle clamp	Earth conductor clamp	Separating element
Type	TUK2 V	TUK2 GV	8AWR	UZD CC3 350350
Version	Cover made of V2A	Cover made of V2A	required for UZD	For UZD-3 to be used as a 90°/T/4WAY
Item no.	7428 14 1	7428 14 0	6288 70 4	7428 13 6



Cassettes also available in brass. For more information contact your Trench sales team.