

Technical Data Sheet

Cable Tray / Post Galvanised / Accessories / Flat 45° Bend / Page 1 of 3

British Standard:

BS EN 61537: 2007

Material Specification:

BS EN 10130:2006

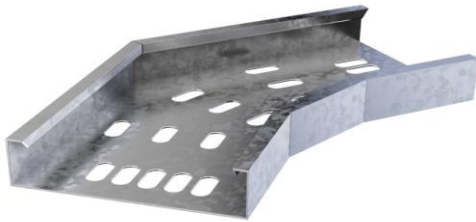


Illustration shown is medium duty

Finish:

Hot Dipped Galvanised to BS EN 1461:2009

Ordering Information:

- Please refer to the following pages or alternatively visit our website below:

<http://www.trenchltd.com>

Product Information:

- All cable tray accessories have a female connection which eliminates the need for couplers when connecting to lengths
- When connecting two accessories together a small piece of cable tray will be required
- Light duty accessories do not have a return flange refer to cable tray lengths data sheet for more information
- Whilst every effort is made to reduce this during the hot dipped galvanising process products are subject to slight distortion and an uneven surface

Packing Detail:

1 x flat 45° bend

Other Options Available:

- Pre Galvanised
- Powder Coated
- Cover to Suit
- Alternative Width/Height/Material Thickness
- Reducing Bends

Technical Data Sheet

Cable Tray / Post Galvanised / Accessories / Flat 45° Bend / Ordering Information / Page 2 of 3

Powder Coated

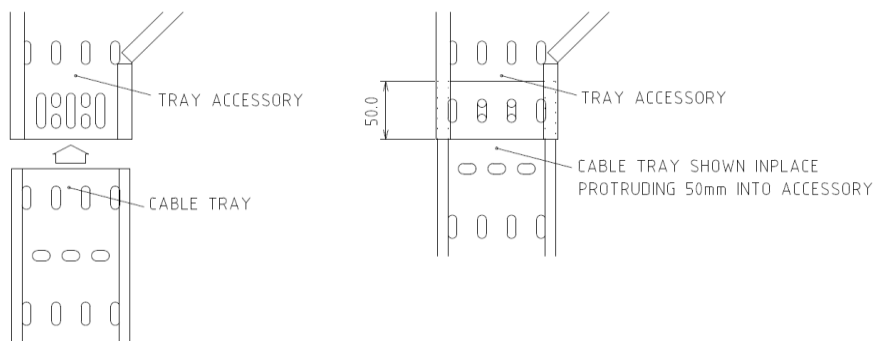
Please ensure that when requesting a quotation for any powder coated products that you have the correct quantities, RAL number and finish (i.e. matt or gloss) in order for us to quote accordingly. Product codes for powder coated items are non-standard, however, dimensions and weights listed in the table on Page 3 are still applicable.

Cable Tray Accessories - Connection to Lengths

All cable tray accessories have a female connection which eliminates the need for couplers when connecting to lengths. When connecting accessory to accessory a short piece of cable tray will be required.

Please see below illustration detailing overlay.

** Fixings not supplied



Cable Tray Flat 45° Bend Cover

If you require a cover please use the codes in the chart on page 3 suffixed with **-CVR**. For example if you require a cover for a medium duty 300mm flat 45° bend the correct code would be **GAMDT300HB-CVR**.

We recommend **3** cover clips (sold as each) to attach the cover to the accessory - these need to be ordered separately they are not supplied with the accessory cover. We offer both closed and ventilated versions, all codes are listed below:

Ventilated	Closed	Tray Range
3ALDT-VCVR-CLIPS	3ALDT-CVR-CLIPS	Light Duty
3AMDT-VCVR-CLIPS	3AMDT-CVR-CLIPS	Medium Duty
3AHDT-VCVR-CLIPS	3AHDT-CVR-CLIPS	Heavy Duty

* Number of clips required for cover with this accessory 3



Technical Data Sheet

Cable Tray / Post Galvanised / Accessories / Flat 45° Bend/ Dimension & Weights Table / Page 3 of 3

Product Code	Dim A (mm) To Suit Width	Dim B (mm) To Suit Height	Dim C (mm) <i>*Refer Below</i>	Dim D (mm)	Weight (kg)
GALDT050HB	50	12.5	123	N/A	0.13
GALDT075HB	75	12.5	133	N/A	0.18
GALDT100HB	100	12.5	143	N/A	0.24
GALDT150HB	150	12.5	164	N/A	0.34
GALDT225HB	225	12.5	195	N/A	0.53
GALDT300HB	300	20	226	N/A	0.80
GALDT450HB	450	20	288.5	N/A	2.21
GALDT600HB	600	20	350.5	N/A	3.36
GAMDT050HB	50	25	123	N/A	0.23
GAMDT075HB	75	25	133	N/A	0.29
GAMDT100HB	100	25	143	N/A	0.34
GAMDT150HB	150	25	164	N/A	0.46
GAMDT225HB	225	25	195	N/A	0.66
GAMDT300HB	300	25	226	N/A	0.90
GAMDT450HB	450	25	288.5	N/A	2.45
GAMDT600HB	600	25	350.5	N/A	3.63
GAMDT750HB	750	25	412.5	N/A	5.04
GAMDT900HB	900	25	475	N/A	6.69
GAHDT050HB	50	50	123	N/A	0.33
GAHDT075HB	75	50	133	N/A	0.38
GAHDT100HB	100	50	143	N/A	0.44
GAHDT150HB	150	50	164	N/A	0.56
GAHDT225HB	225	50	195	N/A	0.78
GAHDT300HB	300	50	226	N/A	1.04
GAHDT450HB	450	50	288.5	N/A	2.69
GAHDT600HB	600	50	350.5	N/A	3.91
GAHDT750HB	750	50	412.5	N/A	5.34
GAHDT900HB	900	50	475	N/A	9.23

Approximate weights shown are a nominal value due to material thickness and tolerance. * This dimension requires consideration of "male to female" coupling see information on Page 2 "connection to lengths".

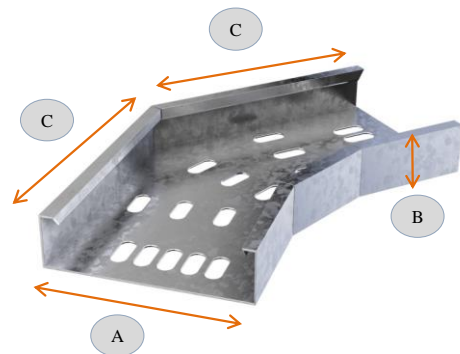


Illustration shown is medium duty