

## Cable Trunking / Pre Galvanised / Lengths / Page 1 of 6

Speedlock Trunking



**British Standard:**

BS EN 50085-1:2005

BS EN 50085-2-1:2006

VDE Testing and Certification Institute

Test Certificate No. 40040200\*

**Material Specification:**

British Standard: BS EN 10346:2015.

**Finish:**

Pre Galvanised

**Ordering Information:**

- Please refer to the following pages or alternatively visit our website below:

<http://www.trenchltd.com>

Screwfix & Tamperproof Trunking



**Product Information: Speedlock**

- Connector screws are serrated on the underside of the head to improve earth continuity
- Connector plates fitted with captive nuts

**Packing Detail: Speedlock**

- 1 x 3m body
- 1 x 3m cover c/w 6 fitted turnbuckles
- 2 x connector plates
- All necessary connector screws

**Packing Detail: Screwfix**

- 1 x 3m body
- 1 x 3m cover
- 1 x LIDFIXKIT (8 x M5 Black Spring Clips, 8 x M5 x10 pozi pan screws-supplied loose)
- 2 x connector plates
- All necessary connectors screws

Screwfix Lid Kit



Tamperproof Lid Kit



**Packing Detail: Tamperproof**

- 1 x 3m body
- 1 x 3m cover
- 1xTPLIDFIXKIT (8xM5 Black Spring Clips, 8xM5x8 T25 Resistorx Screws-supplied loose)
- 2 x connector plates
- All necessary connectors screws

**Other Options Available:**

- Powder Coated
- IP4X
- Alternative Width/Height/Material Thickness/Length (<3m)

## Cable Trunking / Pre Galvanised / Lengths / Ordering Information / Page 2 of 6

### Speedlock/Screwfix Equal Compartment

Use the codes in the table on Page 3 suffixed with **-2EC** for 2 equal compartment or **-3EC** for 3 equal compartment.  
For example if you require trunking with speedlock cover 100mm wide x 50mm high with 2 equal compartments the correct code would be **ST42-2EC** and for 3 equal compartments the code would be **ST42-3EC**.  
If you require trunking with screwfix cover 100mm wide x 50mm high with 2 equal compartments the correct code would be **STSF42-2EC** and if you require screwfix cover with 3 equal compartments the code would be **STSF42-3EC**.

### Speedlock/Screwfix Unequal Compartment

Use the codes in the table on page 3 suffixed with **-2UEC-xx/xx** for 2 unequal compartment or **-3UEC-XX/XX/XX** for 3 unequal compartment. For example, if you require trunking with speedlock cover 100mm wide x 50mm high with 2 unequal compartments of 75mm/25mm the correct code would be **ST42-2UEC-75/25** and for trunking with screwfix cover the code would be **STSF42-2EC-75/25**. If you require trunking with speedlock cover 100mm wide x 50mm high with 3 unequal compartments split 25mm/50mm/25mm the correct code would be **ST42-3UEC-25/50/25** and the same with screwfix cover would be **STSF42-3UEC-25/50/25**.

We can also manufacture 4/5/6 compartment trunking - contact Sales for more information. Please note we require a minimum of 25mm width per compartment.

### Tamperproof Trunking

Use the codes in the screwfix column in the table on page 3 suffixed with **-SEC**. For example, if you require tamperproof trunking 100mm wide x 50mm high single compartment the correct code would be **STSF42-SEC**.

### Powder Coated

To reduce the potential for damages all turnbuckles for powder coated trunking are supplied loose - they can simply be "snapped" into position on site. Please ensure that when requesting a quotation for any powder coated products that you have the correct quantities, RAL number and finish (i.e. matt or gloss) in order for us to quote accordingly. Please note that product codes for powder coated items are non-standard, however, dimensions and weights listed in the table on Page 3 are still applicable.

### IP4X

To achieve IP4X add to each joint 1 x Outer U Piece & 1 x Lid Fix Bar - please follow the link below for ordering instructions.  
<http://www.trenchltd.com/cable-trunking/ip4x-accessories/>

## Cable Trunking / Pre Galvanised / Lengths / Dimensions & Weights / Page 3 of 6

Speedlock Standard	Available Speedlock	Screwfix	Available Screwfix	Width (mm)	Height (mm)	Length (m)	Single Comp Weight (kg) per 3m	Two Comp Weight (kg) per 3m	Three Comp Weight (kg) per 3m
ST22	✓	STSF22	✓	50	50	3	5.27	6.38	✖ ✖
ST32	✓	STSF32	✓	75	50	3	6.33	7.44	8.55
ST42	✓	STSF42	✓	100	50	3	7.39	8.50	9.61
ST62	✓	STSF62	✓	150	50	3	9.51	10.62	11.73
ST82	✓	STSF82	✓	200	50	3	14.84	15.95	17.07
ST92	✓	STSF92	✓	225	50	3	16.19	17.30	18.41
ST122	✓	STSF122	✓	300	50	3	20.27	21.38	22.49
ST33	✓	STSF33	✓	75	75	3	7.36	8.92	10.48
ST43	✓	STSF43	✓	100	75	3	8.42	9.98	11.54
ST63	✓	STSF63	✓	150	75	3	12.42	13.98	15.55
ST83	✖	ST83	✓	200	75	3	16.15	17.71	19.27
ST93	✖	ST93	✓	225	75	3	17.50	19.06	20.63
ST123	✖	ST123	✓	300	75	3	25.43	27.00	28.56
ST44	✓	STSF44	✓	100	100	3	11.45	13.50	15.55
ST64	✓	STSF64	✓	150	100	3	13.88	15.94	17.99
ST84	✖	ST84	✓	200	100	3	17.61	19.66	21.72
ST94	✖	ST94	✓	225	100	3	22.63	24.68	26.74
ST124	✖	ST124	✓	300	100	3	27.33	29.39	31.44
ST66	✓	STSF66	✓	150	150	3	16.63	19.62	22.62
ST86	✖	ST86	✓	200	150	3	24.67	27.66	30.65
ST96	✖	ST96	✓	225	150	3	26.21	29.20	32.19
ST126	✖	ST126	✓	300	150	3	30.90	33.90	36.89
ST88	✖	ST88	✓	200	200	3	28.24	32.67	37.09
ST99	✖	ST99	✓	225	225	3	31.58	36.54	41.49
ST129	✖	ST129	✓	300	225	3	36.26	41.21	46.17
ST1212	✖	ST1212	✓	300	300	3	41.67	48.22	54.76

All dimensions are identical for single and compartmented trunking. Approximate weights shown are a nominal value due to material thickness and tolerance and includes body, lid, fixings and separator (s) where applicable. See Page 2 for Equal/Unequal/Tamperproof/IP4X & Powder Coated ordering information. On 12x12 compartmented only the divider is factory fitted with bolts & not spotwelded.

✖	Due to the design of the Speedlock Turnbuckle it is not possible to use on thicker materials
✖ ✖	Not available due to space restrictions

## Cable Trunking / Pre Galvanised / Lengths / Cable Capacity / Page 4 of 6

### Cable Trunking Selection for Cable Capacity

The Cable Trunking cable capacity guide below can be used to determine the trunking size required, however, you must also take into consideration:

- Use of a fourway or tee will reduce cable capacity factor by up to 50% please consider using offset accessories.
- Larger cables do not sit flat and may require extra space considerations.
- Future wiring capacity requirements.

### Cable Size & Factor (Table 2)

From Table 2 calculate the size of trunking required by identifying the number & type of cables and multiply by the relevant cable factor. The correct trunking should have a capacity equal to or greater than.

Please note the cable factors for trunking in table 2 are adapted from the IEE on site guide (table 5e)

Example:

Qty	Type
140	1.5mm Solid Conductor & PVC Insulation
20	25mm Stranded Conductor & Thermosetting Insulation

**Table 2**

Conductor	SIZE (mm <sup>2</sup> ) Nom.	Cable Factor by Insulation Type	
		PVC BS-6004	Thermosetting BS-7211N
SOLID	1.5	8.0	8.6
SOLID	2.5	11.9	11.9
STRANDED	1.5	8.6	9.6
STRANDED	2.5	12.6	13.9
STRANDED	4	16.6	18.1
STRANDED	6	21.2	22.9
STRANDED	10	35.3	36.3
STRANDED	16	47.8	50.3
STRANDED	25	73.9	75.4

Cable Factor (Table 2)	Calculation	Result
8.0	140x8	= 1120
75.4	20x75.4	= 1508
	<b>Total</b>	<b>= 2628</b>

**Table 3**

Trunking Size	Capacity Factor
22	1125
32	1688
42	2250
33	2501
43	3335
62	3375
82	4500
44	4500
63	4985
92	5063
83	6647
122	6750
64	6750
93	7477
84	9000
123	9923
94	10125
66	10125
124	13500
86	13500
96	15188
88	18000
126	20250
99	22781
129	30375
1212	40500

Using the example above the amount of cables required gives an overall capacity factor of 2628 so referring to Table 3 you can see that the correct minimum size of trunking is ST43 with a capacity of 3335. Please note that if you are using multi compartment trunking calculate using the same method for each compartment.

## Cable Trunking / Pre Galvanised / Lengths / Test Results / Page 5 of 6

\*Testing was carried out by VDE for OBO Bettermann Group and Cable Trunking System (CTS) classified against the clauses listed below:

Clause 6.2: Resistance to impact for installation and application

2 J
-----

Clause 6.3: Operational Temperature

	Min Temperature	Max. Temperature
Storage and Transport Temperature	-25°C	-
Installation & Application Temperature	-25°C	-
Application Temperature	-	60°C

Clause 6.4: Resistance to flame propagation

Non flame propagating CTS.

Clause 6.5: Electrical continuity characteristics:

CTS with Electrical Continuity (Impedance of a length =0.00098Ω/m)

Clause 6.6: Electrical insulating characteristics:

CTS without Electrical Insulation

Clause 6.7: Degree of protection provided by enclosure:

IP30

Clause 6.8: Protection against corrosive or polluting substances:

High Protection inside & out

Clause 6.9: System access cover retention:

CTS with tool operated cover only

Clause 6.10: Electrical protective partition:

CTS without internal protective partition

Clause 6.101: Intended installation positions:

CTS Semi flush or surface mounted on the wall

CTS Semi flush or surface mounted on the ceiling

CTS mounted away from the wall or ceiling using fixing devices

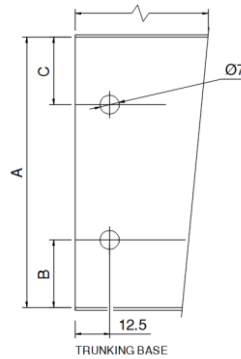
Clause 6.103: Type

Type 2 CTS

## Cable Trunking / Pre Galvanised / Lengths / Fixing Positions / Page 6 of 6

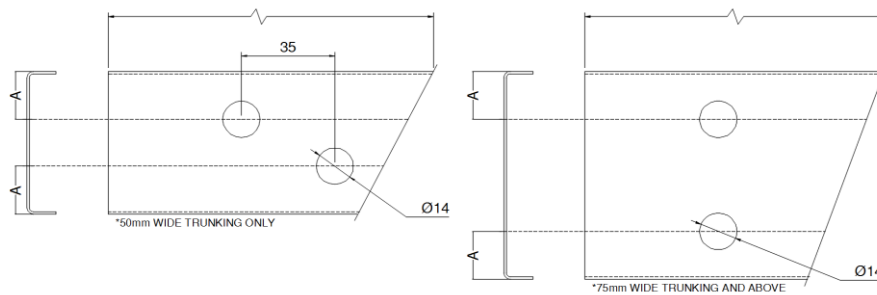
If cable trunking is cut to length then on site drilling will be required. Please see below guides for assistance. Please note all dimensions are in mm.

### Trunking Body Side Fixing Hole Dimensions



Trunking Height Dim A (mm)	Dim B (mm) External	Dim C (mm) External
50	26	N/A
75	50	N/A
100	26	26
150	26	26
225	26	26
300	26	26

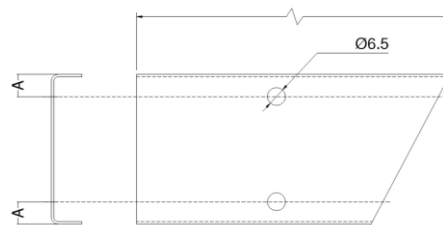
### Trunking Lid Dimensions for Speedlock



Trunking Width (mm)	Dim A (mm) External
50	18.5
75	18.5
100	18.5
150	18.5
200	23.5
225	23.5
300	23.5

- Speedlock spare turnbuckle code : SASLF (PK 10)

### Lid Dimensions for Screwfix & Tamperproof



Trunking Width (mm)	Dim A (mm) External
50	8.5
75	8.5
100	8.5
150	8.5
200	8.5
225	8.5
300	8.5

- Screwfix spare lid fixings code:
- Tamperproof spare lid fixings code:

LIDFIXKIT (8x M5 Black Spring Clips & 8 x M5x10 Pozi pan screws - supplied loose)  
 TPLIDFIXKIT (8x M5 Black Spring Clips & 8 x M5x8 T25 Resistorx screws - supplied loose)