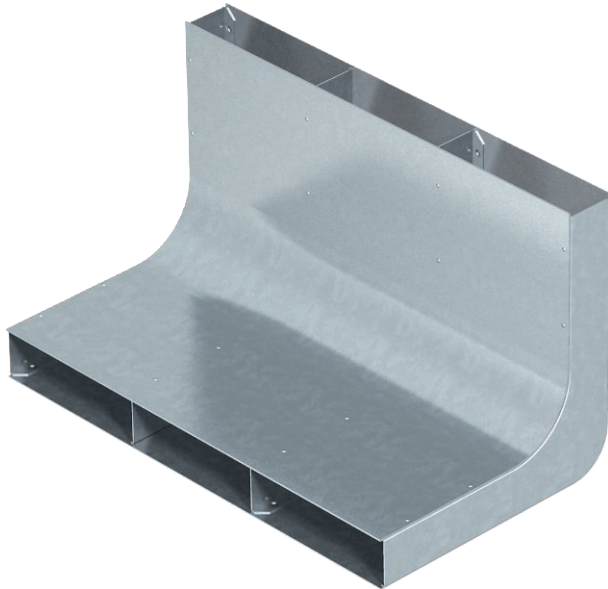


Technical data sheet

Vertical bend, three-compartment, height 38 mm

Item no. 7400660



For vertical direction changes of screed-covered underfloor installation ducts (wall connections, supplies).



St	Steel
FS	Strip galvanised

Additional product text, instruction	An important precondition for correct underfloor installation is the screed structure. In the case of a screed-covered system, it is important that the screed thickness of the duct is at least 35 mm, to avoid the formation of cracks (DIN 18560). Screed height: 60 mm only for on-floor connection technology (Telitank), 70 mm or more for underfloor connection technology.
--------------------------------------	---

Master data

Item no.	7400660
Type	KV3 35038
Description 1	Vertical bend
Description 2	3 compartments for EÜK
Material	Steel
Material symbol	St
Surface	Strip galvanised
Surface to DIN	DIN EN 10346
Surface symbol	FS
Smallest sales unit (VG)	1,00 Piece
Weight	286,00 kg/100 pc.

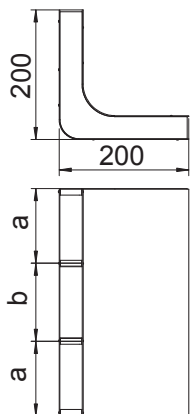
Technical data sheet

Vertical bend, three-compartment, height 38 mm

Item no. 7400660



Technical data



Length	200,00 mm
Width	350,00 mm
Height	38,00 mm
Dimension a	120,00 mm
Dimension b	110,00 mm
Dimension h	38,00 mm
Duct width	350,00 mm
Trunking height	38,00 mm
Number of fixed partitions	2,00
Number of compartments	3,00 pc.
Suitable for screed-flush closed underfloor ducts	<input type="checkbox"/>
Suitable for screed-covered underfloor ducts	<input checked="" type="checkbox"/>
Cross-section, draw a	4.248,00 mm ²
Cross-section, draw b	3.924,00 mm ²
Cross-section, draw 3	4.248,00 mm ²